



# T-1025 RECYCLER

ENGINE:	Cummins QSB6.7 T4F
NET POWER:	215 hp (160 kW)
OPERATING WT:	39,242 lbs (17,800 kg)
TIPPING LOADS	
STRAIGHT:	32,046 lbs (14,536 kg)
FULL TURN:	25,354 lbs (11,500 kg)



FAITH • VISION • WORK

[www.taylorbigred.com](http://www.taylorbigred.com)

Featured truck is shown with optional equipment

## Standard Features: T-1025 Recycler

- 32,046-lb Straight Tipping Load
- 25,354-lb Full Turn Tipping Load
- 182-in Maximum Hinge Pin Height
- Cummins QSB6.7 C-215 HP Tier-4 Final diesel engine
- Automatic Idle System
- Cummins air cleaner w/safety element & restriction indicator
- 4-Speed ZF Powershift Transmission
- Powertrain Protection System for engine and transmission
- ZF Limited Slip Drive Axles with Wet Disc Brakes
- 23.5 R25 L3 Pneumatic Front Tires
- 23.5 R25 L3 Pneumatic Rear Tires

## Chassis

- Heavy Duty Steel Chassis
- Steel Front and Rear Fenders
- Rear Full Fenders swing out for easy access to the engine compartment.
- High Lift Z-Bar Linkage features optimized geometry that positions the load closer to the tires and improves distribution of stress.
- Steel Cylinder Debris Guards and Protective Cylinder Rod Sleeves
- Front Wheel Well Debris Guards (Left and Right Side)
- Auxillary Valve Lines pre-plumbed for accessory functions
- Hinge Pins and Lift Arm Mounting Plates are optimized with special heat treat process to increase strength.
- Electrically Actuated Hood ensures easy access to the engine and its easy-to-reach service points.
- Full rubber floor mat for dampening of vibration and noise.
- The 4-Bar steps are widely spaced to allow debris to fall through.
- Auto-lube system (with protective guarding)
- Articulation Locking Bar
- Hydraulic Quick Coupler
- Tow Hitch
- Hinged Belly Guard
- Rear Guard (Extends across Hood/Radiator/Rear Corners of Loader)

## Cab

- Panoramic View Cab with curved front glass (includes dome light, wide angle mirrors, handrails and full rubber black floor mats).
- Certified ROPS/FOPS cab
- Protective Cab Guards for Front Windshield and L/R side Door/Windows
- Adjustable Grammer Air Suspension Seat provides maximum comfort and reduces operator fatigue
- Adjustable Steering Column
- Single Joystick Control
- Gauge group that includes engine/transmission levels and temperatures, hydraulic temperature, voltage, hour meter, brake oil pressure, Fuel/DEF level and Engine faults.
- Front and Rear Windshield Wiper
- Operator Restraint System (Orange, anti-cinch seat belt)
- Secondary Steering (emergency)
- Heat, Air Condition and Rear Windshield Defrost
- Rear View Camera Display
- Sun Visor
- Fire Extinguisher
- Ride Control

## Electrical

- 24-volt electrical system
- Maintenance free Heavy-duty batteries
- Two front halogen lights (with high/low beam)
- Two front LED lights (mounted top of cab)
- Two rear LED lights (mounted top of cab)
- Electric horn
- Amber strobe light
- Reverse actuated warning alarm

## Vehicle Information Package

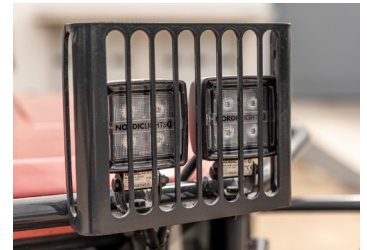
- Operator's Guide
- Maintenance and Service Documentation



Ergonomically designed controls, 4-way adjustable steer column and convenient features all contribute to operator comfort and overall productivity on the jobsite. Air conditioning is standard.



Auto-Lube with Protective Guarding  
(Standard)



Work-Lights with Protective Guarding  
(Standard)



Protective Boots for Cylinder Rods  
(Standard)



Skid Plates & Hinged Belly Pans  
(Standard)



The rear Steel Fenders swing out for easy access to the engine compartment. The electrically actuated, wide opening hood of the Taylor T-1025 Recycler gives you easy access to the engine and its easy-to-reach service points. A Heavy Rear Protective Guard is also standard.



The Taylor T-1025 Recycler features a panoramic view cab with curved front glass has been paired with well-positioned lift arms to allow the operator a clear line of sight to the attachment at ground level. Heavy Protective Cab Guarding is standard.



The T-1025 Recycler features High Lift Z-Bar geometry and standard hydraulic quick coupler which allows the use of multiple tools to suit the job-site needs. The available scrap/recycle bucket with spill guard is ideal for rough conditions that are ever present in the Scrap/Recycle industry. This purpose-built loader also features Front Inner Wheel Well Debris Guards and Cylinder Debris Deflection Guards.

## Reliability

The Taylor T-1025 Recycler is Purpose-Built to thrive in the harsh conditions the Scrap/Recycle industry provides. We understand that keeping your equipment up and running is of utmost importance. Careful thought and consideration was placed on providing generous protection for key components of the T-1025 Recycler. This attention to detail is rooted in the Taylor philosophy that your equipment needs to be reliable and working for your material to move. Key components such as Cummins engines, ZF Axles and ZF Transmission, paired with a nationwide service network that is unrivaled, make the Taylor family of Wheel Loaders a great choice for the Scrap and Recycling Industry.

## Key Features

**CHASSIS & LIFT ARMS:** The Heavy-Duty chassis frame is the backbone of the Taylor T-1025 Recycler Wheel Loader. This crucial structural component ensures strong rigidity and extended machine life. The High Lift Linkage with Z-Bar geometry structure has been optimized for improved distribution of stress. Front Inner Wheel Well Guards and Lift Arm Deflection Guards help protect cylinders against damage from loose debris. Cylinder Rod Boots are also a standard feature.

**DRIVETRAIN:** Cummins emission compliant diesel engine paired with ZF axles and transmissions makes for a tough drivetrain ready to tackle harsh conditions. Special attention has been given to Skid Plates and Hinged Belly Pans to help protect these key components. The limited slip differential axles automatically deliver power to the tires, increasing traction for maximized bucket-filling performance even in the toughest terrain.

**ERGONOMIC ENVIRONMENT:** The T-1025 Recycler Cab design maximizes the space available in the cabin for the operator. The vertically and horizontally adjustable air suspension seat and 4-way adjustable steer column provides the operator benefits of maximum comfort and less fatigue. The sound level inside the cabin is minimized to 73dB (A). Heavy built front and side protective cab guards are standard.

**ADDITIONAL FEATURES:** Ride Control, Auto-Idle, Auto-Lube (with guard), Work Lights (with guards), Reversible Engine Fan and Auxiliary Function Valve and Hosing are all standard.

## Available Attachments

**VERSATILITY:** The quick coupler helps you to get the most out of your machine by easily and quickly switching between a range of attachments to accommodate your needs.

- Scrap Grapple
- Fork Carriage
- Buckets: 4.2 - 10.75 yd<sup>3</sup> Capacity
- Car Forks

See your Taylor Sales Representative for additional options.

## Available Options

- Solid Tire Configurations
- Load Scales
- TaylorTrak Pro - Advanced Fleet Telematics
- Heated Air Suspension Seats
- Heated External Rear View Mirrors
- Cab Air Precleaner System

## Safety

All Taylor Wheel Loader cabs are ROPS and FOPS certified. Slip resistant tread plate and walkway handles provide a safe access environment for the operator and service personnel. The 4-bar steps are widely spaced to allow debris to fall through. Welded anti-slip bars help keep the steps clear and safe. Access to the front of the cab by the operator or service personnel utilizes the same anti-slip bars as the egress steps for maximum anti-slip protection.

Supporting Taylor Lift-trucks Worldwide

# Sudden Service, Inc.



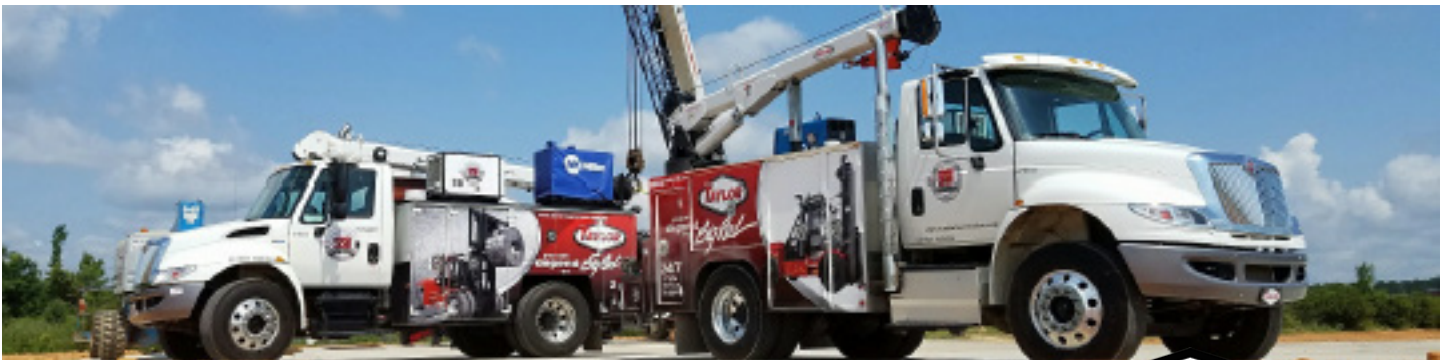
## 24/7 Worldwide Support

Taking Care of Our Customers is Priority One!

Unbeatable customer service, backed by over 90 years of customer satisfaction.

### Your #1 Source for Genuine Taylor Parts

Our customers deserve to know they can always depend on us for service and support 24/7. Because of that expectation, we have factory trained service techs on the ground nationwide. Over 200 service technicians receive continuing education (hands-on) at the factory each year. Your service techs are supported by the best OEM parts and distribution facility in the world. With \$60,000,000 dollars worth of parts distributed across our factory stores and millions more on the shelves at our dealers. We pride ourselves on providing you with unmatched Service & Support by a Worldwide Team of dedicated specialists.



**Have You Considered Leasing?  
Or Custom Fleet Management?**



Our goal is to structure a financial product that improves your profit with reduced operating cost by increasing up-time and offering a wide range of financial solutions to fit the specific needs of your business. Taylor Leasing offers over 100 different financial structures within the main product categories of:

- **Operating Lease** - A financial choice which provides use of equipment for extended period of time with a low monthly operating cost.
- **Finance Lease** - This type of lease offers flexibility in payments with equipment ownership options at the end of the lease term.
- **Fleet Management** - Your needs and goals are always evaluated carefully before providing you with a custom fleet leasing solution. We only include fleet management services (including maintenance solutions detailed below) that help your fleet function more efficiently.
- **Fleet Maintenance** - We offer tailored fleet maintenance solutions, that range from periodic service and emergency repairs to full on site personnel. Taylor Fleet Maintenance Programs assist in budgeting, while helping to eliminate unpredictable expenses and allowing you to focus on your actual business.

For more information Phone: (662) 773-3421 Ext. 400 - Fax: (662) 773-9146 or E-mail Stephen Arnett [sarnett@taylorbigred.com](mailto:sarnett@taylorbigred.com)

[www.taylorleasingandrental.com](http://www.taylorleasingandrental.com)